



MKE 200



Quick Guide	Kort vejledning
Kurzanleitung	Pikaohje
Guide de démarrage rapide	Γρήγορος οδηγός
Guía rápida	Κίσα Kılavuz
Instrucciones resumidas	Краткая инструкция
Instruções resumidas	快速指南
Beknopte gebruiksaanwijzing	快速使用指南
Krótką instrukcja obsługi	クイックガイド
Snabbguide	퀵 가이드

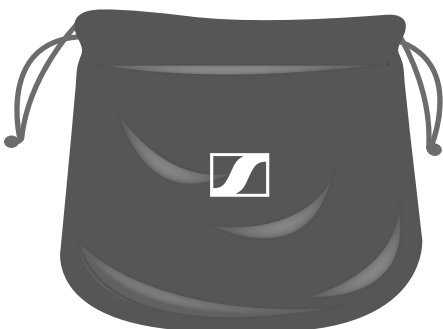
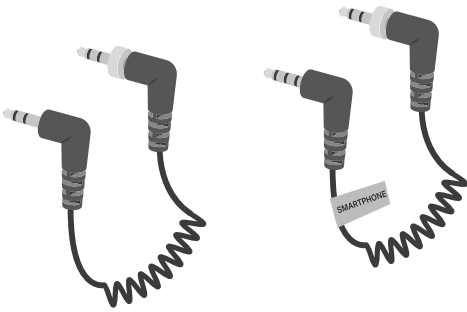
Sennheiser electronic GmbH & Co. KG

Am Labor 1, 30900 Wedemark, Germany
www.sennheiser.com

Publ. 11/20, 587400/A03

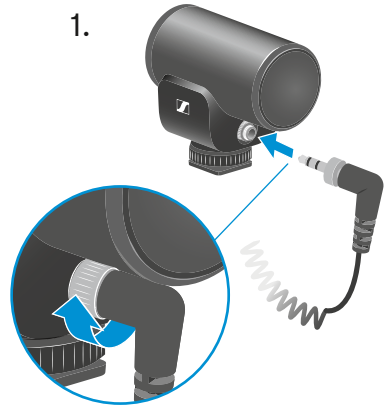
SENNHEISER

In the box

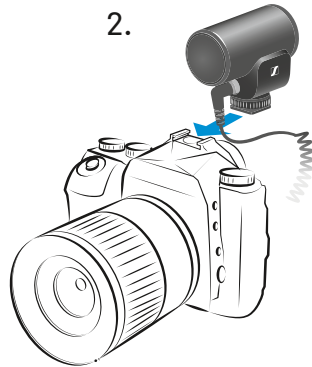


Setup

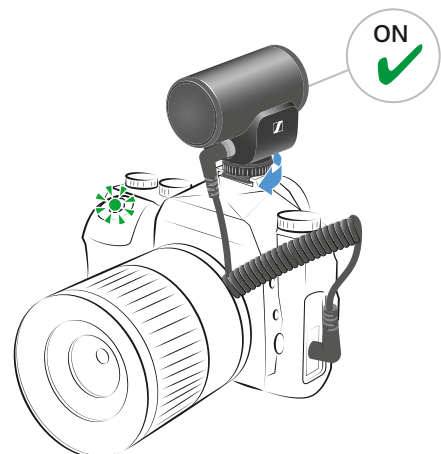
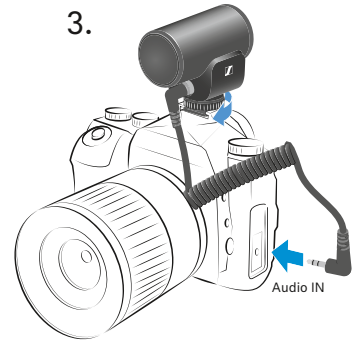
1.



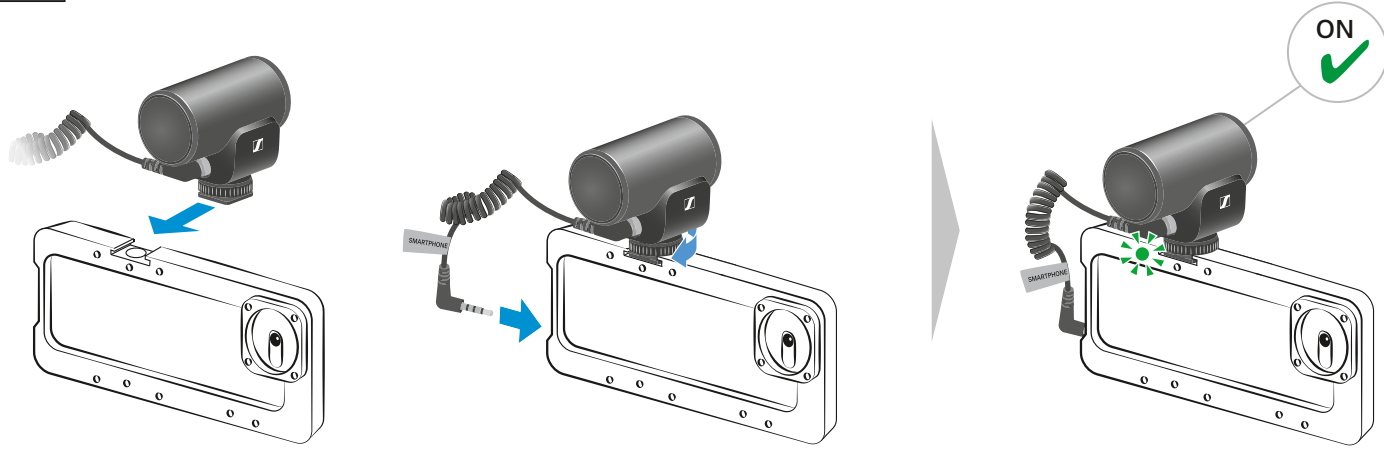
2.



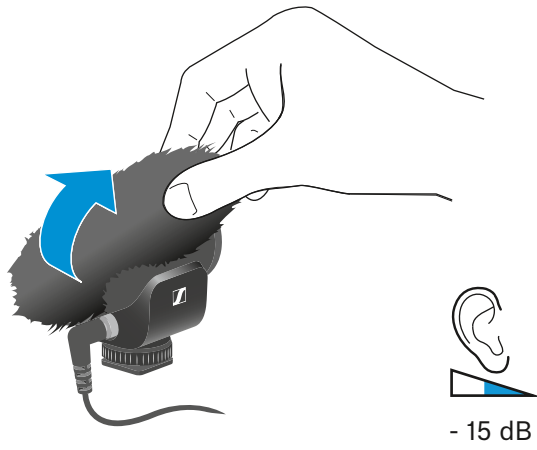
3.



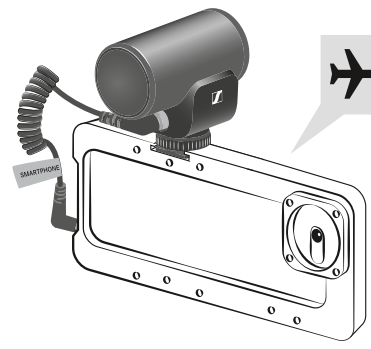
Setup



Accessory



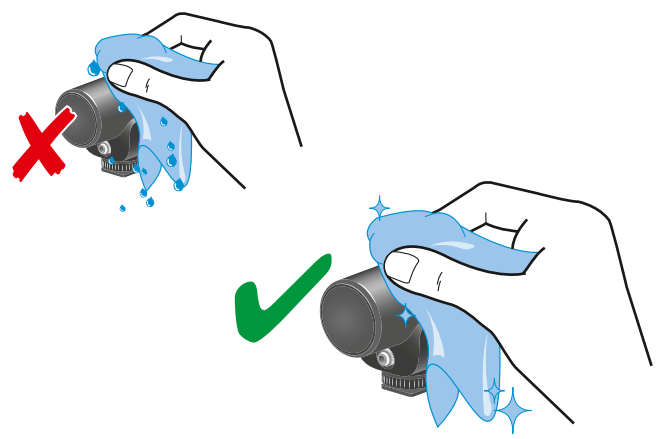
Smartphone



Specifications

Transducer principle	pre-polarized condenser
Frequency response	40 to 20,000 Hz
Pick-up pattern	super cardioid
Sensitivity at 1 kHz	- 33 dB V/Pa
Max. SPL at 1 kHz	120 dB SPL
Equivalent noise level	20 dB SPL(A)
Plug-in power required	2 - 10V
Color	black
Connector	3.5 mm jack
Dimensions	69 x 60 x 39 mm
Weight	48 g

Cleaning



Polar pattern and frequency response

